

New Clothing Resistance Scheme for Estimating Outdoor Environmental Thermal Load

Ferenc Ács^{A*}, Erzsébet Kristóf^B, Annamária Zsákai^C

Received: October 23, 2019 | Revised: December 25, 2019 | Accepted: December 26, 2019

DOI: 10.5937/gp23-23717

Abstract

A new clothing resistance model for estimating outdoor thermal load is proposed and its behavior is analyzed in different weather conditions. It is based on clothed human body energy balance considerations; the human treated is a walking human in outdoor conditions. Weather and human data are taken from the internet site of the Hungarian Meteorological Service and from a Hungarian human dataset, respectively. Environmental thermal load is characterized in terms of clothing resistance r_{cl} and operative temperature. The model's main strength is that it simulates metabolic rate M as simply as possible. r_{cl} deviations caused by personal variations of M are the largest in extreme cold and warm conditions, in the comfort zone this effect is non-essential. r_{cl} deviations caused by wind speed variations can be especially large in large heat excess cases. Further model tests are needed for more extreme conditions.

Keywords: weather; Hungarian human; environmental thermal load; clothing resistance; operative temperature; metabolic activity; wind speed

Introduction

The past of modeling of clothing resistance, assuming steady-state conditions and serving as an outdoor environmental thermal indicator, goes back to the nineteen thirties (Herrington et al., 1937). Herrington et al.'s approach is modified by Burton and Edholm (1955) to achieve more suitable applications in different climate regions of the Earth (e.g. Auliciems & de Freitas, 1976; Auliciems & Kalma, 1979; de Freitas, 1979; Yan & Oliver, 1996; Yan, 2005; Robaa & Hasanean, 2007) and in different weather types (Błażejczyk & Krawczyk, 1994). In all these studies, clothing is characterized by its thermal insulation rate, that is, it is not viewed as thermal regulator medium, which can equally have cooling/heating effects on the human body in heat/cold stresses

to reach clothed human body – outdoor environment thermal equilibrium. Only positive values of clothing resistance r_{cl} are considered when viewing clothing as a thermal insulation medium, with negative values, referring to warm/hot climates or weather, not being considered and equating these values simply to zero (e.g. Yan, 2005). A human is represented via metabolic cost M , which is a constant referring to either a standing human or a human walking at a speed of 4-5 km per hour (e.g. Błażejczyk & Krawczyk, 1994; Auliciems & de Freitas, 1976; de Freitas, 1979). Interperson variation effects on r_{cl} are not treated at all.

The aim of this study is to present a new clothing resistance model and to analyze its behavior in differ-

^A Eötvös Loránd University, Faculty of Science, Department of Meteorology, Pázmány Péter sétány 1/A., Budapest, Hungary, acs@caesar.elte.hu

^B Eötvös Loránd University, Faculty of Science, Department of Meteorology, Pázmány Péter sétány 1/A., Budapest, Hungary and Eötvös Loránd University, Faculty of Science, Excellence Center, Brunszvik utca 2, Martonvásár, Hungary, ekristof86@caesar.elte.hu

^C Eötvös Loránd University, Faculty of Science, Department of Human Anthropology, Pázmány Péter sétány 1/C., Budapest, Hungary, zsakaia@caesar.elte.hu

* Corresponding author: Ferenc Ács; e-mail: acs@caesar.elte.hu; telephone: +36302929408

ent weather conditions. The model is able to treat interperson variation effect in estimating metabolic cost M as simply as possible, this is the main strength of the scheme recommended. The scheme's behavior is analyzed strictly according to thermal equilibrium principles between the clothed human body and the outdoor environment. This means that r_{cl} is interpreted as the heating/cooling effect of clothing on the human body in cold/warm weather; correspondingly it can possess not only positive values in cold weather, but also negative values in warm weather in order to maintain ther-

mal equilibrium. By analyzing the scheme's behavior our goal is also to compare the effect of interperson variations and the effect of changing wind velocity on the evolution of r_{cl} in different weather conditions.

The scheme is briefly presented in section 2. Basic information regarding both the environmental and human data is described in section 3. The scheme's behavior in terms of r_{cl} is considered in section 4.1, and the comparative analysis of wind and interperson variation effects on r_{cl} is presented in section 4.4. Concluding remarks are given in section 5.

Clothing resistance model

The model supposes that 1) the clothing covers the human body completely, 2) the clothing sticks strongly to the skin surface, 3) the clothing's albedo is equal to the skin's albedo, 4) the human is walking at a speed of 1.1 ms^{-1} without sweating, 5) the latent heat of evaporation from the dry skin and from the clothing is equal and 6) the human body is represented as a single segment, that is a one-node human body model (Katić et al., 2016) is used. This physical representation of the clothed human body-air environment system is similar to that presented in Campbell and Norman (1998). The formulae and interpretation of clothing resistance parameter is new.

Basic equations of thermal indicators

The model's basic equations calculate the clothing resistance parameter r_{cl} and the operative temperature T_o . These can be expressed as variables interdependent of each other or as variables that depend upon environmental factors; here both representations are presented,

$$T_o = T_a + \frac{R_{ni}}{\rho \cdot c_p} \cdot r_{Hr}, \quad [1]$$

$$T_o = T_s - (r_{Hr} + r_{cl}) \cdot \frac{M - \lambda E_{sd} - \lambda E_r - W}{\rho \cdot c_p}, \quad [2]$$

$$r_{cl} = \rho \cdot c_p \cdot \frac{T_s - T_a}{M - \lambda E_{sd} - \lambda E_r - W} - r_{Hr} \cdot \left[\frac{R_{ni}}{M - \lambda E_{sd} - \lambda E_r - W} + 1 \right], \quad [3]$$

$$r_{cl} = \rho \cdot c_p \cdot \frac{T_s - T_o}{M - \lambda E_{sd} - \lambda E_r - W} - r_{Hr}, \quad [4]$$

where ρ is air density [kgm^{-3}], c_p is specific heat at constant pressure [$\text{Jkg}^{-1}\text{C}^{-1}$], T_a is air temperature [$^{\circ}\text{C}$], T_s is skin temperature [$^{\circ}\text{C}$] (a constant, $34 \text{ }^{\circ}\text{C}$), r_{Hr} is the combined resistance for expressing thermal radiative and convective heat exchanges [sm^{-1}], R_{ni} is the isothermal net radiation flux density [Wm^{-2}], M is the metabolic heat flux density [Wm^{-2}], λE_{sd} is the latent heat flux density of dry skin [Wm^{-2}], λE_r is the respiratory latent heat flux density [Wm^{-2}] and W is the mechanical work flux density [Wm^{-2}] referring to the activity under consideration, in this case walking. Of course, eqs. (1) and (2) give the same result as eqs. (3) and (4).

Parameterizations of environmental and human factors

To use eqs. (1), (2), (3) and (4), we have to parameterize R_{ni} , r_{Hr} , M , λE_r , λE_{sd} and W . R_{ni} and r_{Hr} comprise environmental, while M , λE_r , λE_{sd} and W human effects. Net radiation is approached by isothermal net radiation as

$$R_{ni} = S \cdot (1 - \alpha_{cl}) + \epsilon_a \sigma T_a^4 - \epsilon_{cl} \sigma T_a^4, \quad [5]$$

where S is the global radiation, α_{cl} is the albedo of clothing, ϵ_a is the atmospheric emissivity and ϵ_{cl} is the emissivity of clothing or skin. In this scheme $\alpha_{cl} = 0.25 - 0.27$, $\epsilon_{cl} = 1$. Global radiation is estimated via relative sunshine duration rsd according to Mihailović and Ács (1985),

$$S = Q_0 \cdot [\alpha + (1 - \alpha) \cdot rsd], \quad [6]$$

where Q_0 is the global radiation constant [$\text{MJ} \cdot \text{m}^{-2} \cdot \text{hour}^{-1}$] referring to clear sky conditions and a 1-hour time period and α is the corresponding dimensionless constant referring to the same hour. ϵ_a depends on clear sky emissivity ϵ_{cs} and cloudiness N (0 for cloudless and 1 for completely overcast conditions),

$$\epsilon_a = \epsilon_{cs} \cdot (1 - N^{1.6}) + 0.9552 \cdot N^{1.6}, \quad [7]$$

$$\epsilon_{cs} = 0.51 + 0.066 \cdot \sqrt{e}, \quad [8]$$

where e is the vapor pressure [Pa]. ϵ_{cs} and ϵ_a are given according to Brunt (1932) and Konzelmann et al. (1994), respectively.

The combined resistance for expressing the thermal radiative and convective heat exchanges r_{Hr} is given by

$$\frac{1}{r_{Hr}} = \frac{1}{r_{Ha}} + \frac{1}{r_R} \text{ with } r_{Ha} [sm^{-1}] = 7.4 \cdot 41 \cdot \sqrt{\frac{D}{U_{1.5}}}, \frac{1}{r_R} = \frac{4 \epsilon_{cl} \sigma T_a^3}{\rho c_p}, \quad [9]$$

where D [m] is diameter of the cylindrical body used to approach the human body (Campbell & Norman, 1998), $U_{1.5}$ is the wind speed at 1.5 m (around breast height). $U_{1.5}$ is calculated from U_{10} (wind speed at a height of 10 m) using a logarithmic wind profile approach supposing neutral thermal stability. In this study, the effect of the direction of a walking human compared to the direction of wind speed is not considered, that is $U_{1.5}$ does not represent air speed relative to the human body.

According to Weyand et al. (2010) a walking human's M can be expressed as,

$$M = M_b + M_w, \quad [10]$$

where M_b is the basal metabolic rate [W] (sleeping human) and M_w is the metabolic rate [W] referring to walking. Both terms can be estimated if gender, age [year], body mass M_{bo} [kg] and body length L_{bo} [cm] of the human considered are known. Frankenfield et al. (2005), reviewing different parameterizations, state that Mifflin et al.'s (1990) M_b parameterization is one of the best,

$$M_b^{male} [kcal \cdot day^{-1}] = 9.99 \cdot M_{bo} + 6.25 \cdot L_{bo} - 4.92 \cdot age + 5, \quad [11]$$

$$M_b^{female} [kcal \cdot day^{-1}] = 9.99 \cdot M_{bo} + 6.25 \cdot L_{bo} - 4.92 \cdot age - 161, \quad [12]$$

To be able to obtain M_b in [Wm^{-2}], the human body surface A [m^2] also has to be estimated. The Dubois and Dubois (1915) parameterization is used for estimating A [m^2] taking M_{bo} and L_{bo} as inputs,

$$A = 0.2 \cdot M_{bo}^{0.425} \cdot \left(\frac{L_{bo}}{100}\right)^{0.725}, \quad [13]$$

M_w is parameterized according to Weyand et al. (2010) as follows,

$$M_w = 1.1 \cdot \frac{3.80 \cdot M_{bo} \cdot \left(\frac{L_{bo}}{100}\right)^{-0.95}}{A}, \quad [14]$$

Formula (1) in Weyand et al. (2010) refers to a walking distance of 1 m. Since the reference walking speed in our model is 1.1 ms^{-1} , Weyand et al.'s (2010) formula (1) is multiplied by the factor 1.1, and dividing this by A , we get M_w in [Wm^{-2}].

The $\lambda E_{sd} + \lambda E_r$ sum can be expressed as a function of M according to Campbell and Norman (1998),

$$\lambda E_r + \lambda E_{sd} = \frac{e_s(T_s) - e_a}{p_a} \cdot [1.83 \cdot M + 237.6], \quad [15]$$

where $e_s(T_s)$ is the saturation vapor pressure at skin temperature, e_a is the actual vapor pressure, p_a is the atmospheric pressure [hPa]. The constant 237.6 is given in [Wm^{-2}]. W depends upon M . According to Auliciems and Kalma (1979), W can be expressed as

$$W = 0.25 \cdot (M - M_b). \quad [16]$$

Data

The scheme uses atmospheric and human data as input data. Atmospheric data refer to the town of Martonvásár (geographical latitude 47.31 °N, geographical longitude 18.79 °E) located in the Central Transdanubian region of Hungary (Figure 1a).

The first author of this study ran on 112 occasions in total at Martonvásár's athletics track (Figure 1b) in the period August 9, 2016 – May 23, 2018.

This is, on average, one occasion every six days. The time duration of each occasion was about 45-60 min-

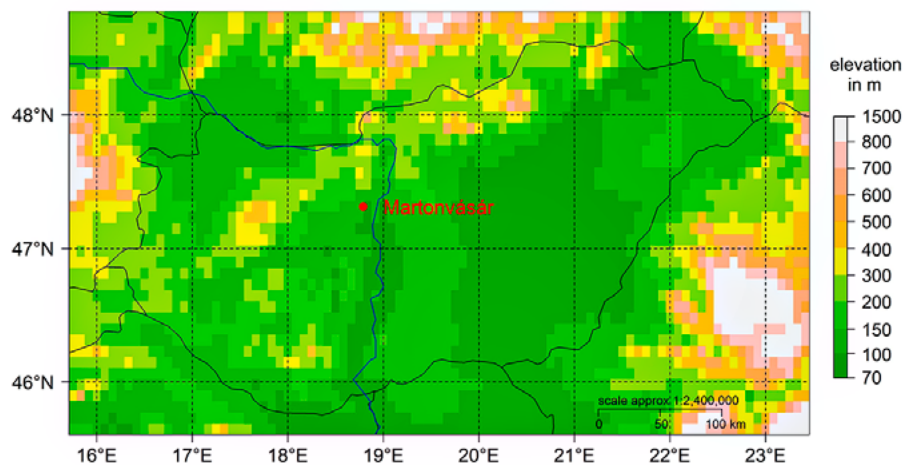


Figure 1a. Area distribution of the elevation intervals and location of Martonvásár in Hungary¹

According to Feddema (Ács et al., 2015) Martonvásár's climate is "cool and dry with extreme variations of temperature". Annual potential evapotranspiration is about 700 mm (cool climate), annual precipitation is about 550 mm, so there is an annual water deficit of about 150 mm (dry climate). Annual air temperature and annual average global radiation are 10-11 °C and 150 Wm^{-2} , respectively. So, annual R_{ni} is about 70 Wm^{-2} . Wind speed of 1-2 ms^{-1} is the most frequent (about 30%). This and the average annual air temperature result r_{Hr} of about 100 sm^{-1} . So, the average annual T_o is 16-17 °C. Correspondingly the mean annual clothing resistance is between 0.4 and 0.8 Clo.

utes; the beginning and the end of the time period is regularly registered. On these occasions human and meteorological data were also collected. In this study,

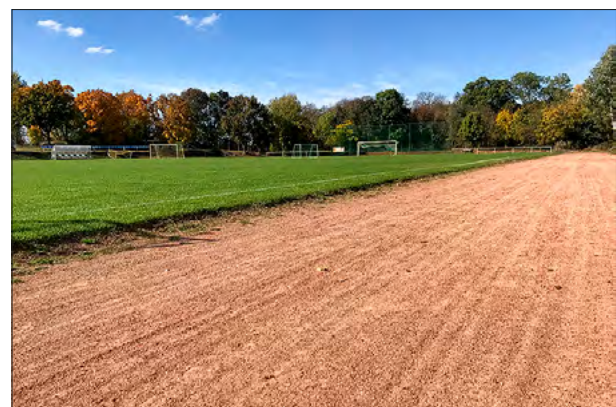


Figure 1b. The athletics track beside football field in Martonvásár (photo is made by Ferenc Ács)

¹ Figures from 1a to 8 are constructed by R programming language (R Core Team, 2019). Figure 1 is created by using functions from packages mapdata (Brownrigg, 2018), maps (Brownrigg et al., 2018), geomapdata (Lees, 2012), GEOMap (Lees, 2018), fields (Nychka et al., 2017).

human data collected (sweating rate, running speed, etc.) are not used. From meteorological data air temperature, air humidity, average and wind gust speeds and atmospheric pressure data are taken from the website of Hungarian Meteorological Service (HMS) for that 10-minute period in the middle of running event's time period. The HMS station-football field beeline distance in Martonvásár is 100-150 m. Relative sunshine duration and cloudiness are visually observed. Anticyclonic weather types prevailed during most of the occasions, there was no case with rain of average or large intensity. The lowest/highest air temperatures are -10 and 34 °C, respectively. Isothermal net radiation fluxes ranged between -82.6 and 482.4 Wm⁻². Relative humid-

ity values ranged between 31 and 100%. Average wind speed changed from calm (0.1 ms⁻¹) to high values (8.6 ms⁻¹). Wind gust was below 1 ms⁻¹ twice, the maximum value registered was 13.4 ms⁻¹. Lastly, atmospheric pressure ranged from 999 to 1039 hPa.

Human data

The model needs the following human data as input data: gender, age, body mass and body length. These data are presented in Table 1 for three adult Hungarian males. Data are taken from a Hungarian human dataset constructed at the Department of Biological Anthropology, Eötvös Loránd University, Budapest (Zsákai et al., 2015).

Table 1. Human characteristics of three Hungarian adult males

Humans	Age [years]	Body mass [kg]	Body length [cm]	Basal metabolic flux density [Wm ⁻²]	Walking energy flux density [Wm ⁻²]	Total energy flux density [Wm ⁻²]
Person 1: adult Hungarian male	64	89.0	190.1	36.0	94	130.0
Person 2: adult Hungarian male	53	95.0	179.0	38.0	108.0	146.0
Person 3: adult Hungarian male	24	120.0	179.0	42.0	124.0	166.0

Note that the interperson variation of M is not larger than 36 Wm⁻².

Results

First, the scheme's general behavior is considered, then its sensitivity to wind variations and interperson variations of M is analyzed. Lastly, the results obtained by two sensitivity tests are compared to each other.

The scheme's behavior

The scheme's behavior is analyzed in terms of r_{cl} and $r_{cl} - T_o$ relationships. Evolution of r_{cl} is simulated for 112 occasions, when completely different environmental conditions prevailed. The most important atmospheric variables (air temperature, isothermal net radiation, average wind and wind gust) for the occasions considered are presented in Figures 2 and 3.

The referring r_{cl} evolution for person 1 using average wind speed and wind gust speed values is presented in Figure 4.

Inspecting Fig. 4 it can be revealed that r_{cl} values are governed by all three meteorological variables (temperature, radiation, wind) (e.g. Matzarakis, 2007), but it seems to be that the most important variables are air temperature and isothermal net radiation. This can be easily seen comparing the evolution of T_a and R_{ni} in Fig. 2 and the evolution of r_{cl} in Fig. 4. If their combined forcing is positive for the given M (heat excess), r_{cl} is negative (cooling is needed to reach heat balance, that is thermal neutrality), and vice versa, when their combined forcing is negative (heat deficit), r_{cl} is positive (heating is needed to reach heat balance, that is thermal neutrality). Note that so far, only positive r_{cl} values are considered in the scientific literature because of the heating effect of clothing. Since humans do not use garments with a cooling effect in everyday life, so far negative r_{cl} values

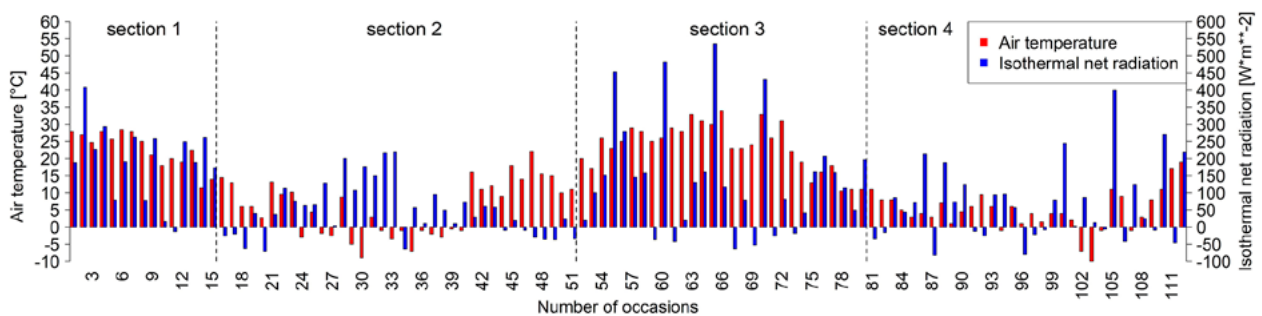


Figure 2. Evolution of representative air temperature and isothermal net radiation values for a running event at the Martonvásár athletics track

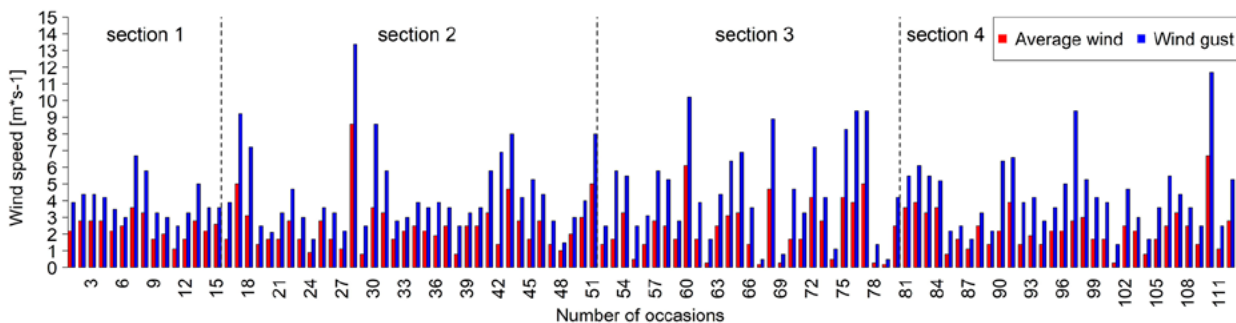


Figure 3. Evolution of average wind speed and wind gust speed on running occasions at the Martonvásár athletics track

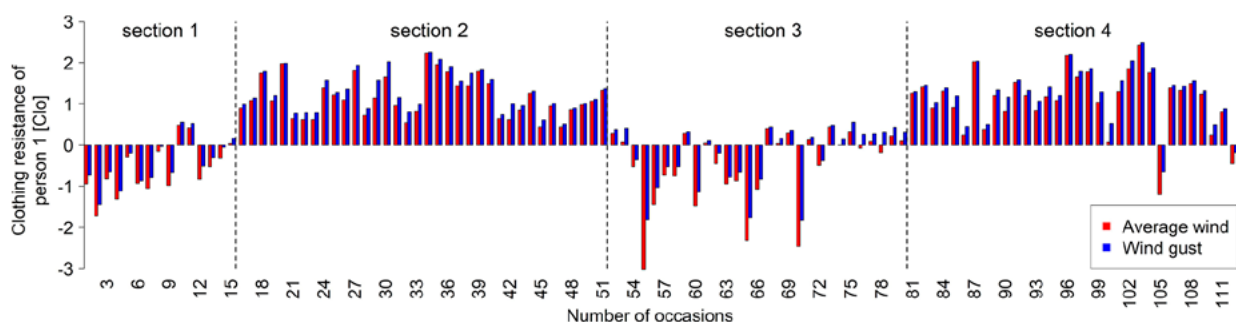


Figure 4. Evolution of clothing resistance of person 1 for average wind speed and wind gust speed values on running occasions at the Martonvásár athletics track

in the scientific literature have not been considered at all. As we see in Fig. 4, r_{cl} changes can be divided into four sections. In the first section (occasions 1–15, except occasions 10, 11, 15) (from August 9, 2016 to October 15, 2016) r_{cl} values are negative; in the second section (occasions 16–51) (from October 25, 2016 to April 23, 2017), r_{cl} values are positive; in the third section (occasions 52–80) (from April 26, 2019 to November 1, 2017) r_{cl} values are negative or weakly positive (close to zero) and lastly, in the fourth section (occasions 81–112) (from November 5, 2017 to May 23, 2018), r_{cl} values are mostly positive except occasions 105 and 112.

As it was mentioned, r_{cl} is governed by all atmospheric forcing variables (temperature, radiation, humidity, wind). It is interesting to see the behavior of r_{cl} for occasions 16 and 17, (October 25 and 29, between 3–4 pm) when $15 > T_a > 13$ °C but $-26 < R_{ni} < -20$ Wm⁻² for higher (5.0 and 9.2 ms⁻¹) and lower (1.7 and 3.9 ms⁻¹) wind speed values. In both cases T_a is around 14 °C, which together with R_{ni} being around -20 Wm⁻² results in an r_{cl} value of about 1 Clo. r_{cl} referring to a larger wind speed is, of course, larger than r_{cl} referring to a lower wind speed, but not much larger. Logically r_{cl} values are larger for wind gust than for average wind for about 0.05–0.10 Clo, the corresponding T_o value changes are 0.3–0.5 °C. One typical summer case is represented on occasion 60 (June 13, between 10–11 am). In this case, $T_a = 26$ °C, $R_{ni} = 482$ Wm⁻² and the wind is strong (average wind speed 6.1, gust wind speed 10.2 ms⁻¹), the referring r_{cl} and T_o values are -1.47

and -1.14 Clo, 51.2 and 47.0 °C, respectively. As we see, in this case the effect of wind changes on r_{cl} seems to be stronger than in the former two cases.

It is also important to see the model's behavior in the comfort zone (thermal neutrality), which is defined as the zone where $-0.2 < r_{cl} < 0.2$ Clo (a zone around $r_{cl} = 0$ line). Among the 112 occasions there are 12 such occasions (occasions 8, 15, 53, 61, 68, 71, 74, 76, 77, 78, 80 100) for average wind speed and person 1. Meteorological forcings together with r_{cl} , T_o and r_{Hr} values are presented in Table 2.

Inspecting meteorological forcings one can see that they can differ significantly, this is especially conspicuous for occasions 71 (clear sky, dry land-surface), 78 (fog, moist grass) and 100 (partly cloudy, snow-covered land-surface), when sky and land-surface conditions also differed enormously. The average value of meteorological forcings and human thermal variables are also given in Table 2. The average and the instantaneous values of meteorological forcings and human thermal variables are in accordance. These results are consistent with literature results, that is, they are comparable to them (e.g. Potchter et al., 2018).

Sensitivity of r_{cl} to wind speed variations

Wind speed variation is represented by comparison of average wind and wind gust referring to a 10-minute time interval. As mentioned, the 10-minute time interval is in the middle or approximately in the middle of the running time period. r_{cl} deviations for person 1 to

Table 2. Instantaneous and average values of meteorological and human thermal variables referring to thermal neutrality ($-0.2 < r_{cl} < 0.2$ Clo) on 12 occasions registered in the period August 9, 2016 – May 23, 2018.

Occasion	Air temp. [°C]	Net isothermal rad.[Wm ⁻²]	Average wind speed [ms ⁻¹]	Clothing resistance [Clo]	Operative temp. [°C]	Combined heat exchange resistance [sm ⁻¹]
8	25	78.3	3.3	-0.15	30.0	77
15	14	172.9	2.6	0.04	26.4	87
53	17	100.4	1.7	0.07	25.1	97
61	29	-42.6	1.7	0.05	25.8	91
68	23	79.7	4.7	0.04	27.6	69
71	26	-26.2	1.7	0.13	24.0	93
74	19	42	0.5	-0.01	23.5	128
76	16	206.8	3.9	-0.07	29.0	76
77	18	159.0	5.0	0.09	27.1	69
78	10.5	114	0.3	-0.18	24.6	149
80	11.0	197	2.5	0.10	25.5	89
100	4.0	244.9	1.7	0.07	24.9	103
Average values						
	17.7	110.51	2.47	0.015	26.12	94

variations of wind speed in the course of the running occasions can be seen in Figure 4. r_{cl} deviations vary from very small (0.02 Clo) through middle (0.2-0.3 Clo) to large (0.5-0.6 Clo) or very large (about 1 Clo) values. Small r_{cl} changes seem to be more typical in the case of heat deficit (for $T_a > 0$, $R_{ni} < 0$; for $T_a < 0$, $R_{ni} > 0$ or $T_a < 0$, $R_{ni} < 0$), this can be observed for occasions 20, 34, 39, 49, 69, 81, 96 and 103. Note that on occasion 30 ($T_a = -9$ °C, $R_{ni} = 177.2$ Wm⁻²) the r_{cl} deviation is much larger, about 0.3 Clo. Large r_{cl} deviations seem to be more typical in the case of heat excess, as in the course of occasions 55, 60, 65, 70 and 105. The largest r_{cl} deviation is denoted for occasion 55 ($T_a = 23$ °C, $R_{ni} = 452.9$ Wm⁻²), when the average wind speed is small (0.5 ms⁻¹), but wind gust speed is unequivocally larger than the average wind speed (2.5 ms⁻¹). In this case, r_{cl} changed from -3.02 for average wind speed to -1.81 Clo for wind gust speed, the corresponding T_o values changed from 70 °C to 54.7 °C, respectively. Note that on occasions 60,

65, 70 and 105 the average wind speed is not less than 1.7 ms⁻¹, that is, it cannot be considered as small. Moderate or larger r_{cl} deviations can also be observed in the case of thermal neutrality (r_{cl} close to zero), as on occasions 68 and 78. Occasion 78 is interesting from that point of view that wind variation (average wind speed 0.3 ms⁻¹, wind gust speed 1.4 ms⁻¹) changed r_{cl} from -0.2 Clo (a case of light heat excess, a cooling garment is needed) to 0.3 Clo (case of light heat deficit, a heating garment is needed). The same effect of wind variation on r_{cl} deviations can also be observed for occasion 76.

Sensitivity of r_{cl} to interperson variations of M

Table 1 reveals that M for a human walking at a speed of 1.1 ms⁻¹ can vary a few tens of Wm⁻² from human to human, so interperson r_{cl} variations are also expected. r_{cl} values for person 1 (r_{cl}^1) and 3 (r_{cl}^3) for all 112 occasions are compared separately for average wind and wind gust in Figures 5 and 6, respectively.

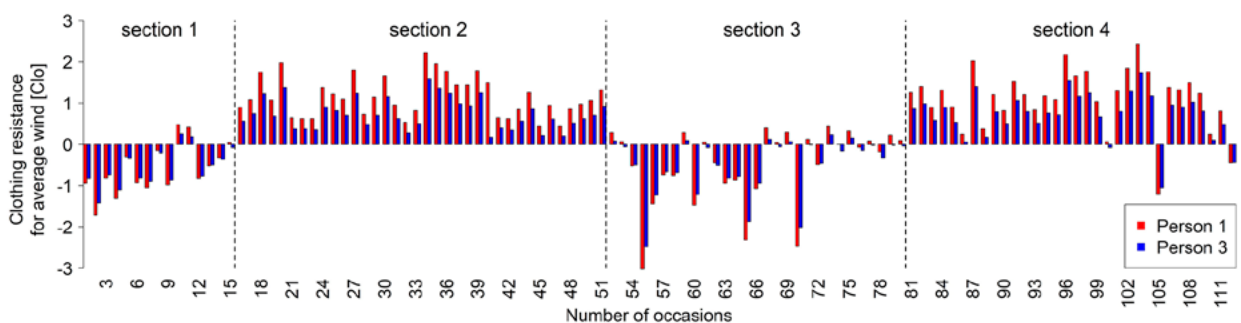


Figure 5. Evolution of clothing resistances of person 1 and 3 for average wind speed in course of running at the Martonvásár athletics track

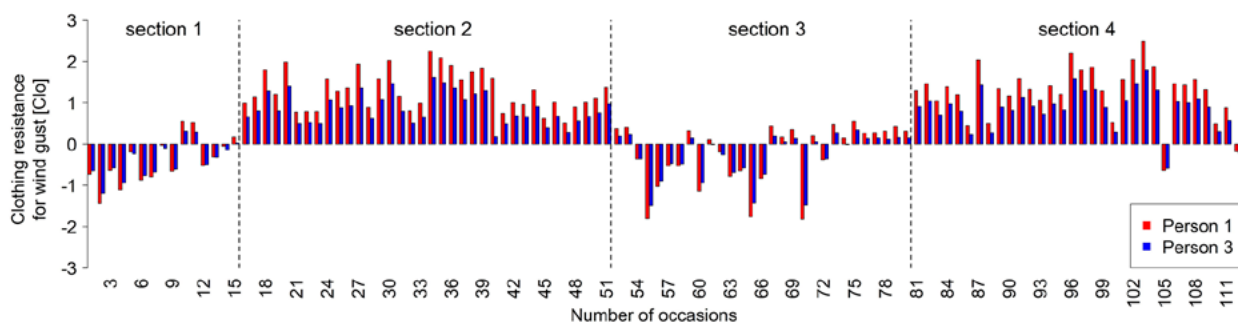


Figure 6. Evolution of clothing resistances of person 1 and 3 for wind gust speed in course of running at the Martonvásár athletics track

In both figures, systematic differences between r_{cl}^1 and r_{cl}^3 can be easily observed. In heat deficit cases ($r_{cl} > 0$), $r_{cl}^1 > r_{cl}^3$; in heat excess cases ($r_{cl} < 0$), $r_{cl}^3 > r_{cl}^1$. In both cases, the relationship between r_{cl}^1 and r_{cl}^3 is determined with the fact that $M^3 > M^1$ (M^1 , M^3 are the metabolic activities of persons 1 and 3, respectively). For instance, in a heat deficit case, when a heating garment is needed, less heating is needed for person 3 than for person 1, since $M^3 > M^1$. Vice versa, in a heat excess case, when a cooling garment is needed, less cooling is needed for person 3 than for person 1, when $T_o > T_s$, and vice versa, larger cooling is needed for person 3 than for person 1, when $T_o < T_s$. These latter cases can be observed during occasions 5, 8, 14, 62, 76 and 78. r_{cl} differences of about 0.3 Clo appeared many times, for instance, on occasions 18, 20, 27, 30,

r_{cl} differences are slightly larger for average wind than for wind gust.

The $r_{cl}(T_o)$ point distribution is of special importance; this point distribution can be called a person-environment-curve. Personal characteristics are represented via M in r_{cl} , environmental characteristics are in both r_{cl} and T_o , but T_o is much less dependent on personal characteristics than r_{cl} . Personal characteristics in T_o are represented via D in the calculation of r_{Ha} , but D does not change so strongly from person to person as, for instance, $U_{1,5}$ over the course of the time. In our analysis, D is taken as constant. The $r_{cl}-T_o$ point distributions for persons 1, 2 and 3 for all 112 occasions separately for average wind and wind gust are presented in Figs. 7 and 8, respectively. The largest interperson variations of r_{cl} can be observed for average

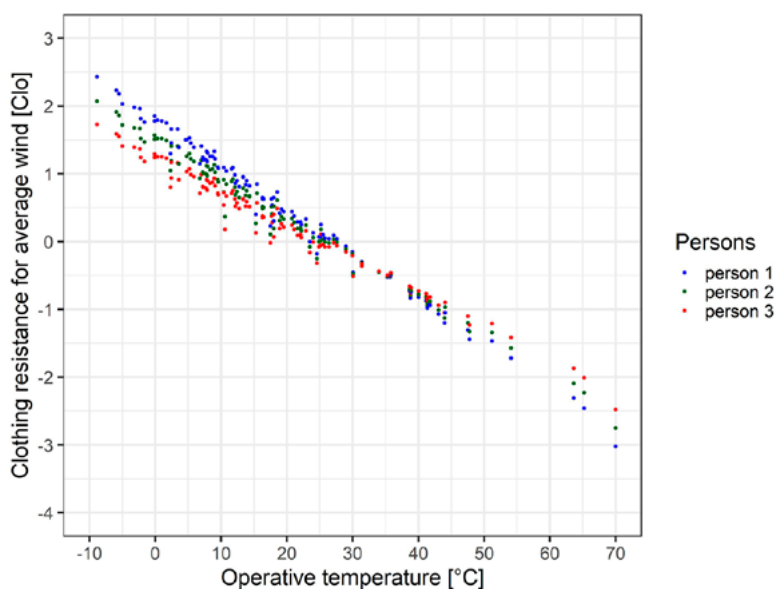


Figure 7. Clothing resistance-operative temperature dependence for average wind and for the persons considered. The number of points for one person is equal to the number of occasions

34, 35, 36, 38, 39, 50, 60, 65, 70, 87, 91, 96, 97, 98 and 111. The largest interperson r_{cl} differences amount to about 0.5–0.6 Clo. It should be mentioned that interperson

² Figure is constructed by R functions from ggplot2 package (Wickham, 2016).

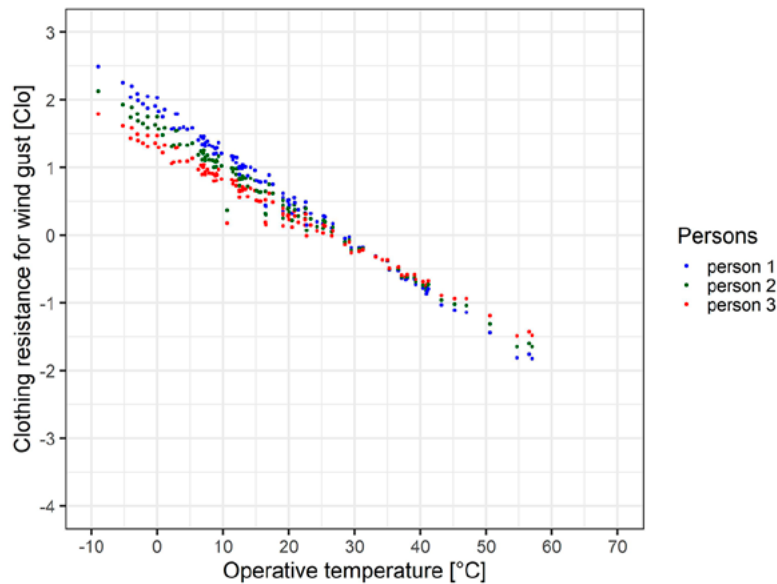


Figure 8. Clothing resistance-operative temperature dependence for wind gust and for the persons considered. The number of points for one person is equal to the number of occasions

wind case in extremely warm and cold situations. For $T_o = -8.9$ °C r_{cl} varies from 2.43 Clo through 2.13 Clo to 1.73 Clo; similarly, for $T_o = 70$ °C r_{cl} variations are from -3.02 through -2.75 to -2.48 Clo. As we see, the maximum range of interperson r_{cl} variations can be above 0.5 Clo, when T_o is either extreme cold or extreme warm. Of course, larger T_o extremes than those registered can happen in Hungary. Note that interperson r_{cl} variations are much smaller, almost negligible, in the vicinity of thermal neutrality (r_{cl} values around zero), often called the comfort zone. For the persons considered and for average wind speeds, the comfort zone is in the 24-28 °C operative temperature interval. For wind gust speeds, this temperature interval is somewhat higher. The smallest interperson r_{cl} variations are in those points for which T_o is very close to T_S (see eq. 4). For average wind, $T_o = 34$ °C on occasion 112 (May 23, 2018), in this case there is only 1 point instead of 3 points. For wind gust, $T_o = 34.2$ °C on occasion 54 (May 19, 2017) and $T_o = 33.2$ °C on occasion 13 (October 1, 2016), in these two cases closest to T_S practically 1 point can be seen instead of 3 points. Figs. 7 and 8 differ not only in these nuances, but also in the T_o ranges. For average wind, the T_o range is roughly between -10 and 70 °C, while for wind gust between -10 and 57 °C. The effect of wind gust with respect to average wind

on T_o seems to be strong especially in the cases of large heat excess (occasions 55, 60, 65, 70). The largest T_o shift towards lower values is obtained for occasion 55 (May 23, 2017), then T_o decreased from 70 to 54.7 °C; the corresponding wind speed values are only 0.5 and 2.5 ms^{-1} . The T_o change is also great on occasion 70 (July 30, 2017), in this case T_o dropped from 65.2 to 57.0 °C, the corresponding wind speed values are 1.7 and 4.7 ms^{-1} . In a heat deficit case, occasions 30 and 90 can be mentioned, the simulated T_o decreases are about 3 °C. Occasion 100 can be mentioned as a case of thermal neutrality, then T_o dropped from 24.9 (average wind of 1.7 ms^{-1}) to 20 °C (wind gust of 3.9 ms^{-1}).

Comparison of the two sensitivity test's results

The effect of wind speed variation and the interperson variation of M on r_{cl} (briefly WS and M effects) can be compared by parallel analysis of Figs. 4 and 5. It can be observed that the WS effect seems to be larger than the M effect in heat excess cases (sections 1 and 3 in Figs. 2 or 4) and vice versa the M effect seems to be larger than the WS effect in heat deficit cases (sections 2 and 4 in Figs. 2 and 4). Of course, representation of wind speed variations and interperson variations of M can vary; consequently the relationships obtained are valid strictly only for the conditions defined.

Conclusions

A new clothing resistance model for estimating outdoor thermal load is presented and its behavior is analyzed in different weather conditions. The basis of

the model is formed by energy balance equations referring to human body-clothing and clothing-air environment interfaces. The human considered is a hu-

man walking at a speed of 1.1 ms^{-1} who is not sweating. Weather data are taken from the internet site of the Hungarian Meteorological Service; the source of human data is a Hungarian human dataset constructed at the Department of Biological Anthropology, Eötvös Loránd University, Budapest (Zsákai et al., 2015). r_{cl} is interpreted according to thermal equilibrium principles. It can be positive/negative when environmental heat deficit/excess exists, which can be brought to thermal equilibrium by using garments exerting heating/cooling effects. Such an interpretation of r_{cl} is new. Simulated r_{cl} values are not checked in a cold environment by independent registration of garments and by measuring their thermal conductivity. This is a task for the future. The scheme reproduces cold and thermally neutral situations well, similarly no weaknesses are registered in warm or extremely warm conditions. The sensitivity to interperson variations of metabolic activity showed by the scheme was not negligible. This sensitivity is the largest in extreme cold and/or warm conditions. Then the r_{cl} differences registered can reach 0.5-0.7 Clo. In the comfort zone the sensitivity of r_{cl} to interperson variations of M is

much less, and can be neglected. Under average wind speed conditions the thermal neutrality ($r_{cl} \approx 0$) is located in the 24-28 °C operative temperature interval. r_{cl} sensitivity to wind speed variations seems to be the largest in heat excess conditions. The largest r_{cl} difference obtained in such a case is 1.2 Clo, the corresponding T_o values changed from 70 (average wind speed 0.5 ms^{-1}) to 54.7 (wind gust speed 2.5 ms^{-1}) °C. This r_{cl} difference is the largest among all r_{cl} differences obtained in the scope of sensitivity tests. Regarding the effects of interperson variations of M and of changing wind velocity on the evolution of r_{cl} under different thermal loads, a definite conclusion cannot be made. More tests have to be made taking into account larger variations in M and more extreme weather conditions. The scheme proposed is applied using weather data, but there is no obstacle for its application using climate data. Regardless of the data used one of the major strengths of the scheme is that it is able to treat interperson variations of the metabolic cost as simply as possible. We intend to use it in the future as software for characterizing personal heat thermal load of weather and/or climate.

References

- Ács, F., Breuer, H., & Skarbit, N. (2015). Climate of Hungary in the twentieth century according to Feddema. *Theoretical and Applied Climatology*, 119, 161-169.
- Auliciems, A., & de Freitas, C.R. (1976). Cold stress in Canada: A human climatic classification. *International Journal of Biometeorology*, 20(4), 287-294. doi:10.1007/bfo1553585
- Auliciems, A., & Kalma, J.D. (1979). A Climatic Classification of Human Thermal Stress in Australia. *Journal of Applied Meteorology*, 18(5), 616-626. doi:10.1175/1520-0450(1979)018<0616:accoht>2.0.co;2
- Błażejczyk, K., & Krawczyk, B. (1994). *Bioclimatic Research of the Human Heat Balance*. Polish Academy of Sciences–Institute of Geography and Spatial Organization. No. 28, 66 pp.
- Brownrigg, R. (2018). *mapdata: Extra Map Databases*. R package version 2.3.0. Original S code by R.A. Becker, A.R. Wilks; URL: <https://CRAN.R-project.org/package=mapdata>.
- Brownrigg, R., Minka, T.P., & Deckmyn, A. (2018). *maps: Draw Geographical Maps*. R package version 3.3.0. Original S code by R.A. Becker, A.R. Wilks; URL: <https://CRAN.R-project.org/package=maps>.
- Brunt, D. (1932). Notes on radiation in the atmosphere. I. *Quarterly Journal of the Royal Meteorological Society*, 58(247), 389-420. doi:10.1002/qj.49705824704
- Burton, A.C., & Edholm, O.G. (1955). *Man in a Cold Environment*. London: Edward Arnold Ltd.
- Campbell, G.S., & Norman, J.M. (1998). *An Introduction to Environmental Biophysics*. New York: Springer. doi:10.1007/978-1-4612-1626-1
- de Freitas, C.R. (1979). Human climates of Northern China. *Atmospheric Environment* (1967), 13(1), 71-77. doi:10.1016/0004-6981(79)90246-4
- Dubois, D., & Dubois, E.F. (1915). The Measurement of the Surface Area of Man. *Archives of Internal Medicine*, XV(5_2), doi:10.1001/archinte.1915.00070240077005
- Frankenfield, D., Roth-Yousey, L., & Compher, C. (2005). Comparison of Predictive Equations for Resting Metabolic Rate in Healthy Nonobese and Obese Adults: A Systematic Review. *Journal of the American Dietetic Association*, 105(5), 775-789. doi:10.1016/j.jada.2005.02.005
- Herrington, L.P., Winslow, C.-A., & Gagge, A.P. (1937). The relative influence of radiation and convection upon vasomotor temperature regulation. *American Journal of Physiology-Legacy Content*, 120(1), 133-143. doi:10.1152/ajplegacy.1937.120.1.133
- Katić, K., Li, R., & Zeiler, W. (2016). Thermophysiological models and their applications: A review. *Building and Environment*, 106, 286-300. doi:10.1016/j.buildenv.2016.06.031
- Konzelmann, T., van de Wal, R.S., Greuell, W., Bintanja, R., Henneken, E.A., & Abe-Ouchi, A. (1994).

- Parameterization of global and longwave incoming radiation for the Greenland Ice Sheet. *Global and Planetary Change*, 9(1-2), 143-164. doi:10.1016/0921-8181(94)90013-2
- Lees, J.M. (2018). *GEOmap: Topographic and Geologic Mapping*. R package version 2.4-4. URL <https://CRAN.R-project.org/package=GEOmap>.
- Lees, J.M. (2012). *geomapdata: Data for topographic and Geologic Mapping*. R package version 1.0-4; URL: <https://CRAN.R-project.org/package=geomapdata>.
- Nychka, D., Furrer, R., Paige, J., & Sain, S. (2017). *fields: Tools for spatial data*. R package version 9.9; URL: <https://cran.r-project.org/web/packages/fields/index.html>. DOI: 10.5065/D6W957CT.
- Matzarakis, A. (2007). Climate, thermal comfort and tourism. In B. Amelung, K. Blazeyczyk, & A. Matzarakis (Eds.), *Climate Change and Tourism: Assessment and Coping Strategies*. Maastricht -Warsaw -Freiburg: Polish Academy of Sciences - Institute of Geography and Spatial Organization. pp 140-154; ISBN: 978-00-023716-4.
- Mifflin, M.D., St, J.S.T., Hill, L.A., Scott, B.J., Daugherty, S.A., & Koh, Y.O. (1990). A new predictive equation for resting energy expenditure in healthy individuals. *The American Journal of Clinical Nutrition*, 51(2), 241-247. doi:10.1093/ajcn/51.2.241
- Mihailović, D.T., & Ács, F. (1985). Calculation of daily amounts of global radiation in Novi Sad. *Időjárás*, 257-261; 89; in Hungarian.
- Potchter, O., Cohen, P., Lin, T., & Matzarakis, A. (2018). Outdoor human thermal perception in various climates: A comprehensive review of approaches, methods and quantification. *Science of The Total Environment*, 631-632, 390-406. doi:10.1016/j.scitotenv.2018.02.276
- R Core Team. (2019). *R: A Language and Environment for Statistical Computing*. Vienna, Austria: R Foundation for Statistical Computing. URL: <http://www.R-project.org/>.
- Robaa, S.M., & Hasanean, H.M. (2007). Human climates of Egypt. *International Journal of Climatology*, 27(6), 781-792. doi:10.1002/joc.1434
- Zsákai, A., Mascie-Taylor, N., & Bodzsár, É.B. (2015). Relationship between some indicators of reproductive history, body fatness and the menopausal transition in Hungarian women. *Journal of Physiological Anthropology*, 34(1), 35-42. DOI: 10.1186/s40101-015-0076-0.
- Yan, Y.Y., & Oliver, J.E. (1996). The Clo: A Utilitarian Unit to Measure Weather/Climate Comfort. *International Journal of Climatology*, 16(9), 1045-1056. doi:10.1002/(sici)1097-0088(199609)16:9<1045::aid-joc73>3.3.co;2-f
- Yan, Y.Y. (2005). Human Thermal Climates in China. *Physical Geography*, 26(3), 163-176. doi:10.2747/0272-3646.26.3.163
- Weyand, P.G., Smith, B.R., Puyau, M.R., & Butte, N.F. (2010). The mass-specific energy cost of human walking is set by stature. *Journal of Experimental Biology*, 213(23), 3972-3979. doi:10.1242/jeb.048199
- Wickham, H. (2016). *ggplot2: Elegant Graphics for Data Analysis*. Springer - Verlag. ISBN 978-3-319-24277-4; URL: <http://ggplot2.org>.